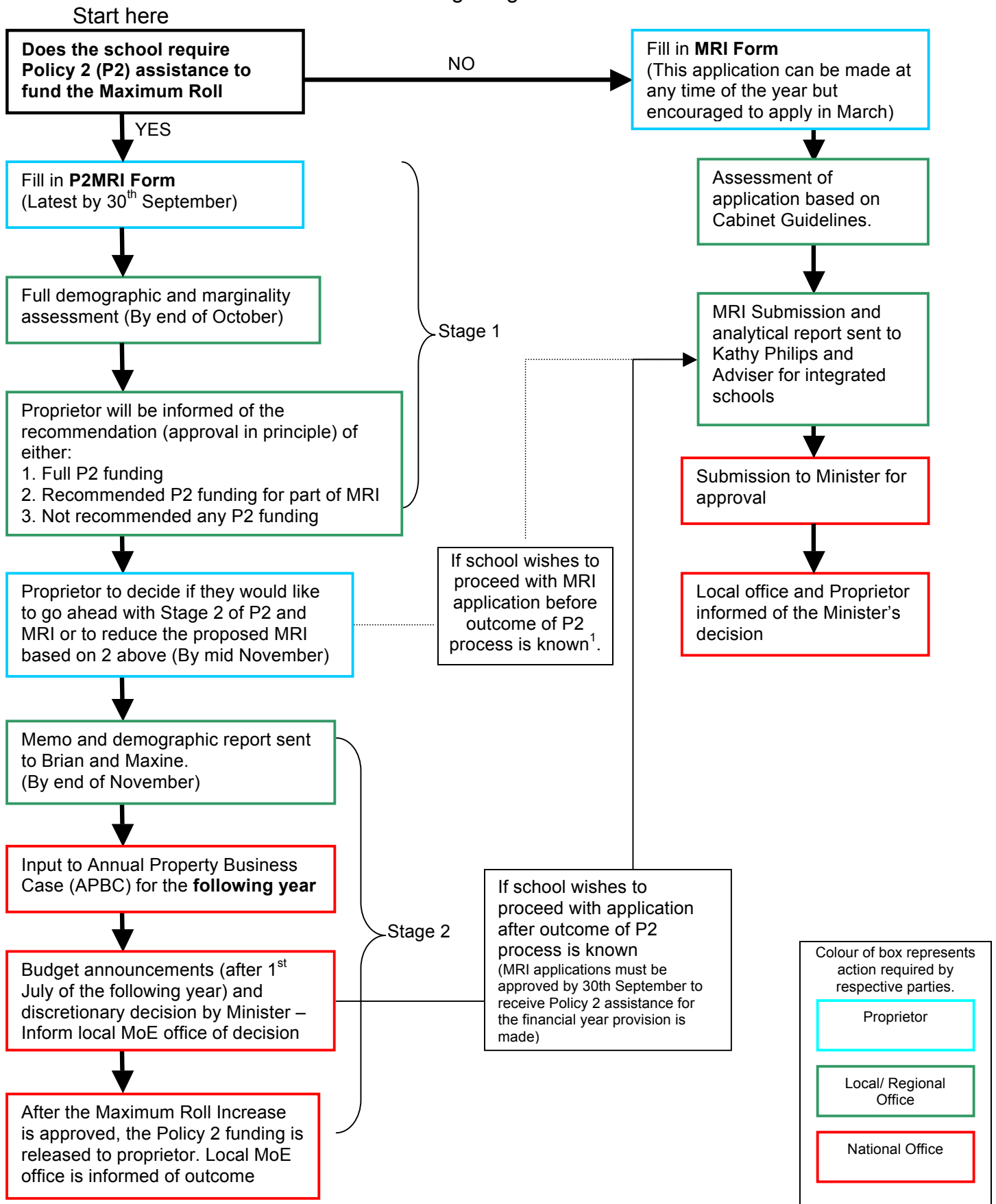


Policy 2 and Maximum Roll Increase Process (classrooms only) For Existing Integrated Schools



Note:

- **Policy 2 classroom resource can only be linked with a particular MRI application. It cannot be applied retrospectively to previously approved MRI.**

¹ At Stage 1, any recommended Policy 2 assistance is only approval in principle and does not guarantee the final financial approval. The risk is with the proprietor proceeding with a MRI application before the next APBC is approved. The less risky option is proceeding with the MRI application after the outcome of the Business Case is known.